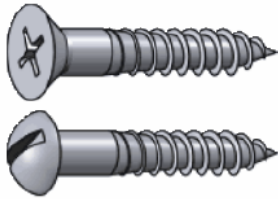
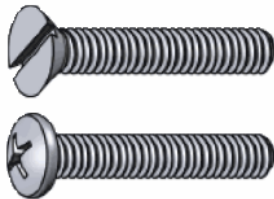


Fastener Categories



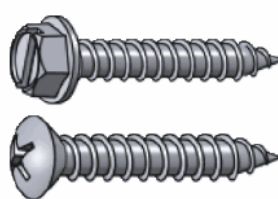
Wood Screws

Screws with a smooth shank and tapered point for use in wood. Abbreviated WS



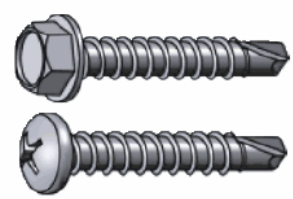
Machine Screws

Screws with threads for use with a nut or tapped hole. Abbreviated MS



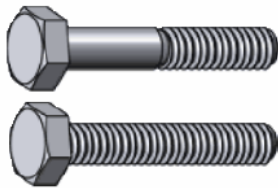
Sheet Metal Screws

Fully threaded screws with a point for use in sheet metal. Abbreviated SMS



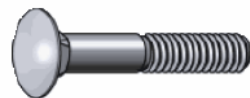
Self Drilling SMS

A sheet metal screw with a self drilling point.



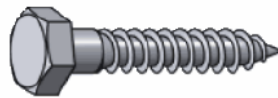
Hex Bolts

Bolts with a hexagonal head with threads for use with a nut or tapped hole. Abbreviated HHMB or HXBT.



Carriage Bolts

Bolts with a smooth rounded head that has a small square section underneath.



Lag Bolts

Bolts with a wood thread and pointed tip. Abbreviated Lag.



Set Screws

Machine screws with no head for screwing all the way into threaded holes.

Head Styles



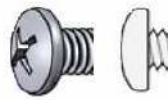
Flat

A countersunk head with a flat top. Abbreviated FH



Oval

A countersunk head with a rounded top. Abbreviated OH or OV



Pan

A slightly rounded head with short vertical sides. Abbreviated PN



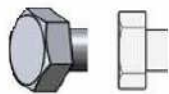
Truss

An extra wide head with a rounded top.



Round

A domed head. Abbreviated RH



Hex

A hexagonal head. Abbreviated HH or HX



Hex Washer

A hex head with built in washer.



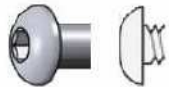
Slotted Hex Washer

A hex head with built in washer and a slot.



Socket Cap

A small cylindrical head using a socket drive.



Button

A low-profile rounded head using a socket drive.